

logitech®

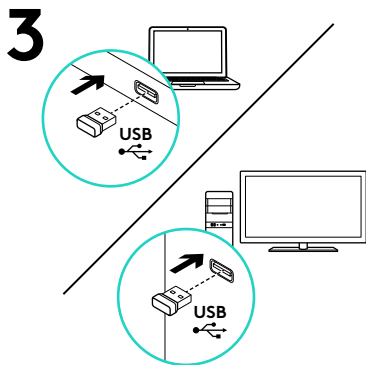
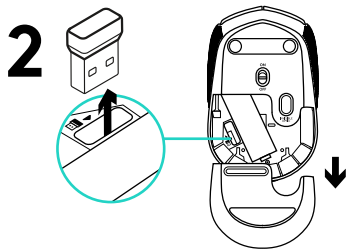
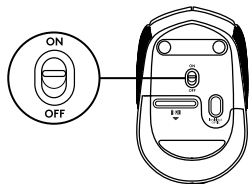
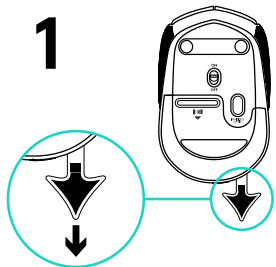
M170/M171 Reliable wireless connectivity



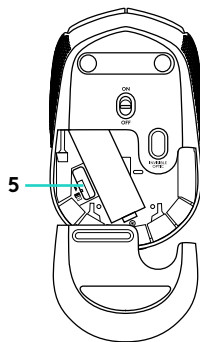
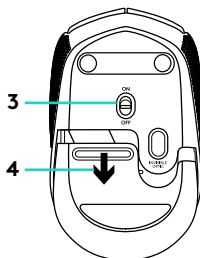
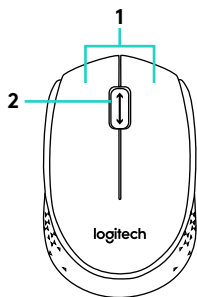
Setup Guide

Languages

| | | | |
|----------------------|----|-----------------------------|----|
| English | 3 | Česká verze | 48 |
| Deutsch | 6 | Slovenčina | 51 |
| Français | 9 | Українська | 54 |
| Italiano | 12 | Eesti | 57 |
| Español | 15 | Latviski | 60 |
| Português | 18 | Lietuvių | 63 |
| Nederlands | 21 | Български | 66 |
| Svenska | 24 | Hrvatski | 69 |
| Dansk | 27 | Srpski | 72 |
| Norsk | 30 | Slovenščina | 75 |
| Suomi | 33 | Română | 78 |
| Ελληνικά | 36 | Türkçe | 81 |
| По-русски | 39 | 84 العربية | |
| Po polsku | 42 | 87 עברית | |
| Magyar | 45 | | |



Features

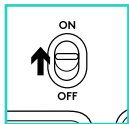


1. Left and right mouse buttons
2. Scroll wheel
Press the wheel down for middle button (function can vary by software application)

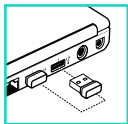
3. On/Off slider switch
4. Battery door release
5. USB Nano-receiver storage

Help with setup: Mouse is not working

1



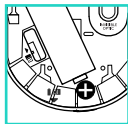
2



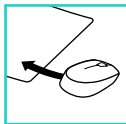
3



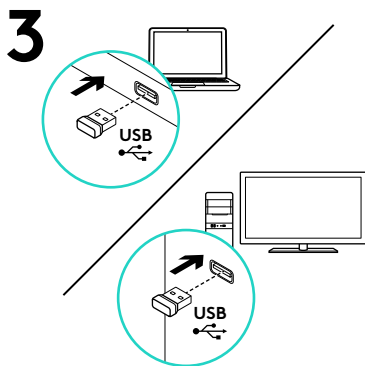
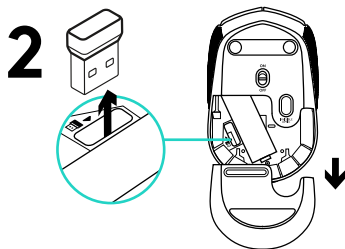
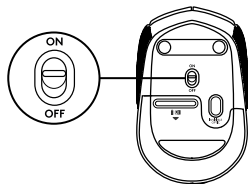
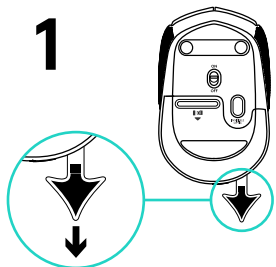
4



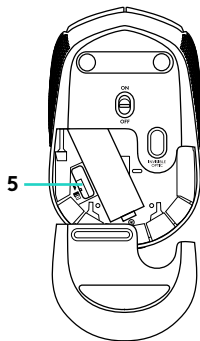
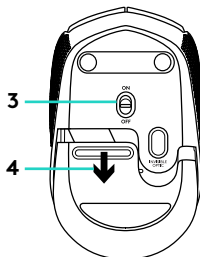
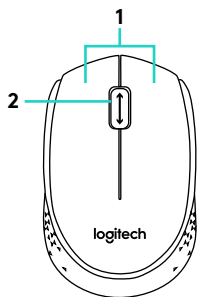
5



1. Is the mouse powered on?
2. Is the Nano receiver securely plugged into a USB port? Try changing USB ports.
3. If the Nano receiver is plugged into a USB hub, try plugging it directly into a USB port on your computer.
4. Check the orientation of the battery inside the mouse.
5. Try a different surface. Remove metallic objects between the mouse and the Nano receiver.
6. For Windows® operating systems, reconnect the mouse with the Nano receiver by launching the Connect utility from www.logitech.com/connect_utility.



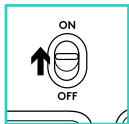
Componentes



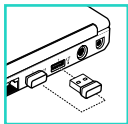
1. Botones izquierdo y derecho
2. Botón rueda
Pulsa el botón rueda para usarlo como botón central (la función puede variar según la aplicación de software).
3. Conmutador de encendido/apagado
4. Botón de compartimento de pilas
5. Almacenamiento del nano receptor USB

Ayuda con la instalación: El ratón no funciona

1



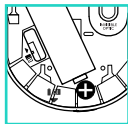
2



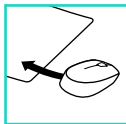
3



4



5



1. ¿Has encendido el ratón?
2. ¿Está el nano receptor conectado correctamente a un puerto USB? Prueba otros puertos USB.
3. Si el nano receptor está conectado a un concentrador USB, conéctalo directamente a un puerto USB del ordenador.
4. Comprueba la orientación de la pila dentro del ratón.
5. Prueba el ratón en otra superficie. Retira cualquier objeto metálico situado entre el ratón y el nano receptor.
6. En los sistemas operativos Windows®, vuelve a conectar el ratón con el nano receptor iniciando la Utilidad de conexión desde www.logitech.com/connect_utility.

